

Formerly Canadian Homestead Magazine

Canada's Home Décor & Lifestyle Magazine

Canadian
Source Guide

CANADIAN HOME trends

canadianhometrends.ca



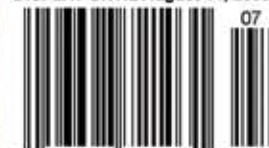
SPACES
we LOVE

Glen Peloso
of Restaurant Makeover

15 Budget SAVVY Designs

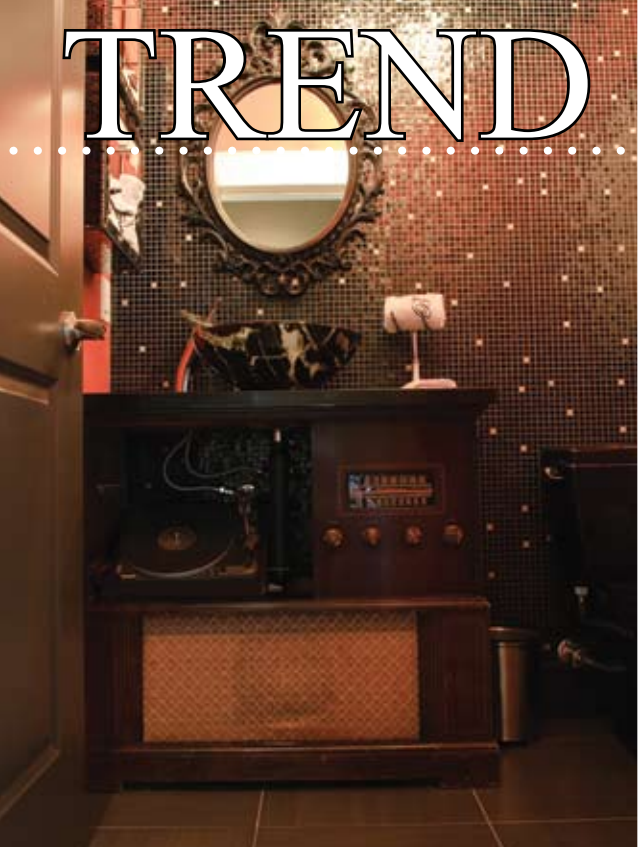
Marc Atiyolil's Secrets to Good Design

CANADA \$4.95
DISPLAY UNTIL August 14, 2009



56698 72103 1
PM 41438018

Q & A



Wall Colour by Benjamin Moore (CC 530 Brandon Beige)

Cabinets from Richwood Cabinets (Dark Stain Maple Shaker Style Door with White Glass)

Appliances by Kitchen Aid

Granite - Oceanic Stone (Absolute Black Granite - straight edge)

Meet Robert...

CANADIAN HOME TRENDS' MARC ATIYOLIL

Reisa, you are the designer of this beautiful home which possesses both functionality and stylish design. Can you tell us what unique features a reader can find in this home?

REISA POLLARD

There are a variety of amazing features in this home. We made sure we stayed away from ordinary. Robert and Marty (the homeowners) have built so many spec homes that it was really important to me that they lived in a home inspired by their personality and preferences rather than just the typical trends and set ups. For example, most homes have a standard wood fireplace surround, but for Robert's fireplace we used oversized tile and for Marty's, stone with a solid slab of Fir.

As builders by profession, the homeowners were very practical, so everything I designed had to make sense from a functional perspective as well as an aesthetic one. For example, while they didn't see the practicality of investing in a polished concrete garage floor, they didn't mind me painting the walls bright orange.

One room downstairs was slated to function as a mechanical room - it had a 12ft solid concrete ceiling and no windows. However, once we realized what an amazing media room it would make, Marty adjusted the plans to make it twice its originally proposed size!

The home boasts a lot of personality. Both Marty and Robert liked the idea of completing a home with finishing details. That's what gave me the idea to cut squares into the walls and finish them with lighting. The squares allowed the homeowners to accessorize on their own terms by simply filling the space with one accessory.

MARC ATIYOLIL

As a designer, one must always consider the relation between your client's lifestyle and their spaces. Can you tell us a little about your clients and how their tastes and lifestyles impacted the project?

REISA POLLARD

This is such a critical aspect of my design planning. I ask so many questions about how people live, sometimes they have to stop and think because they are surprised by the questions I ask. In this case, I knew the clients since we had worked together on other projects. They were both bachelors that had been working together for years and each has a teen child, so one would think their tastes might be similar. This was not the case. Robert loves colour, very moody ambient light and modern, clean lines. Marty, however, enjoys the feel of a comfortable more traditional home. His interest was in a mountain home-style fireplace and a light airy kitchen. My task was to investigate their tastes well enough to give them each their own home and unique look under one roof.

MARC ATIYOLIL

What was the biggest challenge with this design project?

REISA POLLARD

The lighting. Robert occupied the upper part of the home but wanted very dim lighting, and Marty was in the lower part but wanted fairly bright lighting.

MARC ATIYOLIL

How did you overcome this challenge?

REISA POLLARD

Variety. Because Robert never likes a bright light source, I had to make sure that the place didn't end up gloomy, so I chose to put lighting in a variety of places. There are lit cabinets, small recessed lights that highlight features, lights in the "wall boxes" and different types of pendants and chandeliers. We also put dimmers on almost every switch so that he can control the lighting. For Marty, we

Meet Marty...

Pendant lights
from Kichler

Faucet
by Moen

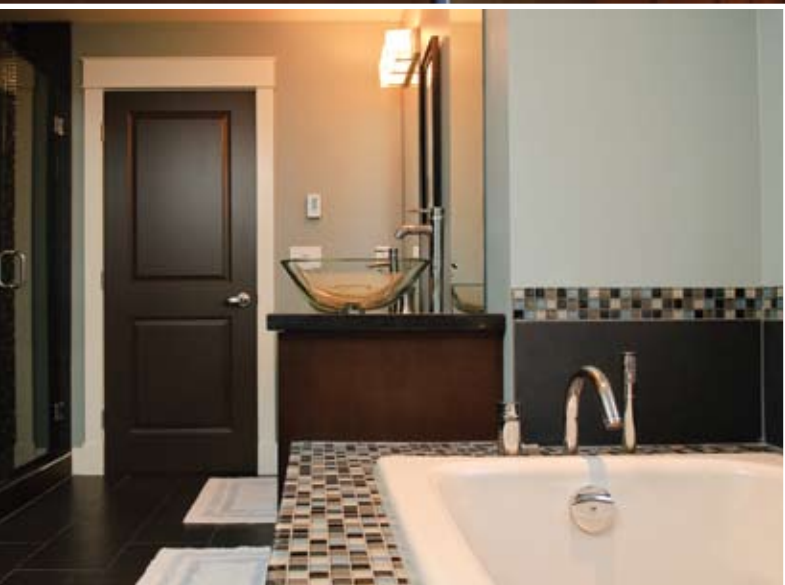
Sink
by Blanco

Cabinetry from
Richwood Cabinets
(Maple shaker style with
rain glass)

Wall Colour by Benjamin Moore
(CC 530 Brandon Beige)

Countertops - Gold Leaf
granite with Ogee edge

Appliances by
Kitchen Aid



made sure there was adequate pot and supplementary lighting, especially in the kitchen.

MARC ATIYOLIL

These spaces are quite unique in their design and concept. Can you tell us where the inspiration for the design came from?

REISA POLLARD

The homeowners were quite open to trusting my input and with that freedom; I usually put more pressure on myself to come up with something that will really impress them. Knowing that Robert had been really impressed with some previous modern projects that I had done, I looked to some of my favourite hotels like the W or The Gramercy in New York to find a way to keep the modern element livable and comfortable for him and his son. Robert had always commented on textures, so I felt it was important to give his space interest through different elements such as stainless, tile, stone, and wood.

Marty has a daughter and a serious girlfriend, so there needed to be more of a feminine element to his space. I looked to an older home that I once lived in and the historic details it had, such as crown moldings and beautiful wood floors. There were numerous references to furniture he liked from Restoration Hardware, and I was able to combine this with space saving techniques so that the place stayed open and airy.

MARC ATIYOLIL

What types of styles are highlighted in the design of these spaces?

REISA POLLARD

I call Robert's space, the "Metrosexual's comfort zone." It shows that he cares and wants it to look great, but it's not fussy. It is modern, eclectic, even a little rustic, and has surprises throughout. Marty's is classic and even elegant, but each room is inviting and comfortable. It's as though Andy Warhol lives upstairs and Martha Stewart lives downstairs!

MARC ATIYOLIL

Talk to us about these two gorgeous kitchens.

REISA POLLARD

I can never decide which kitchen I like better. They perfectly reflect two different sides of me. We really struggled with the space in Robert's kitchen. It seemed so long and cavernous, and all the plans we experimented with would place the chef too far away from guests to be social. As a solution, we kept adding cabinetry to pull the space further out and closer to the living area. We ended up with a plan that had a banquette, a full breakfast table, an island, a desk and a bar. To counter all of the dense cabinetry, we added the windows to the top cabinet doors and the stainless range hood. We featured the beams on the ceiling that we were originally going to hide, and created a focal point in the middle of the room with the shattered glass breakfast table and various pendant lights hanging down. Although Robert was interested in bold colour, I opted for the stainless tile backsplash to keep the kitchen timeless.

Downstairs in Marty's kitchen we had very limited space. Marty really liked the idea of an island, but his girlfriend thought it was important to have a table for them to enjoy family dinners. We managed to give them both, by building in a pretty banquette in the corner where a closet was originally slated to go. Because the kitchen is the first thing you see when you walk in the front door of the home, I wanted it to represent the feel of the whole space. Classic, with modern features, that has an inviting, familiar feel.

MARC ATIYOLIL

For our readers looking to design their own spaces in the near future, what type of wisdom could you pass along to them?

REISA POLLARD

Be committed. If you don't know what you like, start ripping pages out of design magazines, and you will start to see the consistency emerge. Once you have chosen your path, stick with it, there will always be people with different preferences, new trends, etc. Just stay in touch with the ideas you started with and you will love the result.